



MONTHLY MEMBERSHIP PROGRESS REPORT

District 4 C1

Results as of: 06/30/2019

GMT: HOWARD HUDSON

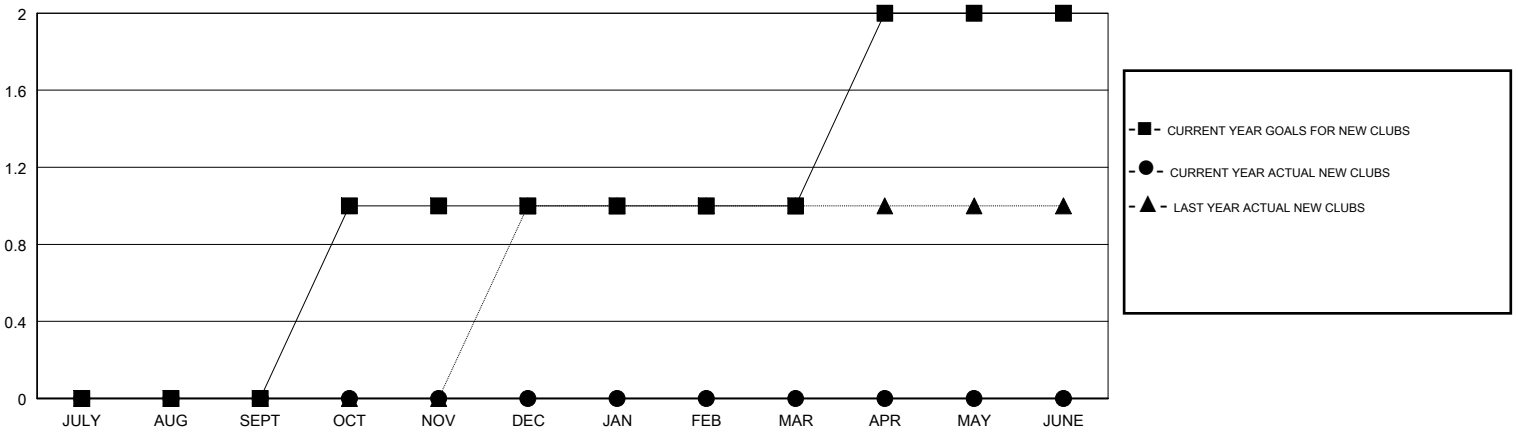
LOCATION CALIFORNIA

GMT CA

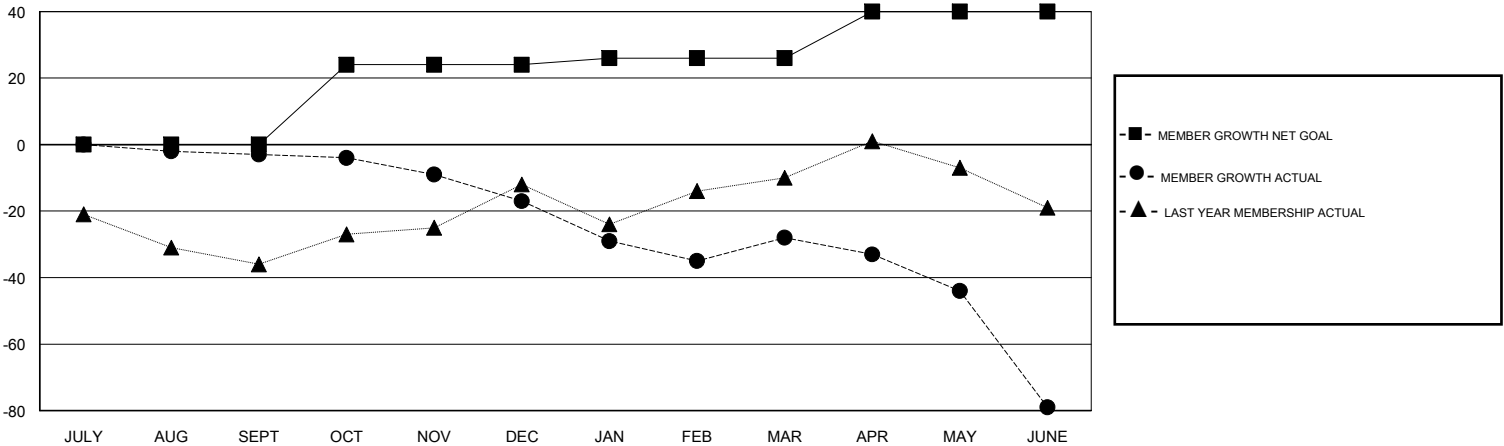
Clubs			
RESULTS FOR 2018-2019			
QUARTER	NEW CLUB GOAL	NEW CLUBS	DROPPED CLUBS
JULY/AUG/SEPT	0	0	1
OCT/NOV/DEC	1	0	1
JAN/FEB/MAR	0	0	0
APR/MAY/JUNE	1	0	2

Members			
RESULTS FOR 2018-2019			
QUARTER	MEMBER GROWTH NET GOAL	MEMBER GROWTH ACTUAL	DROPPED MEMBERS ACTUAL (including transfers)
JULY/AUG/SEPT	0	28	26
OCT/NOV/DEC	24	26	35
JAN/FEB/MAR	2	33	41
APR/MAY/JUNE	14	31	80

GOALS AND ACTUAL NEW CLUBS CUMULATIVE



GOALS AND ACTUAL MEMBERS CUMULATIVE



DROPPED CLUBS: 4	34 CLUBS OF 47 ADDED 1 OR MORE NEW MEMBERS	<u>GENDER DISTRIBUTION</u>	
		MALE	668 (66.47%)
DROPPED MEMBERS	CLICK HERE FOR CUMULATIVE MEMBERSHIP DATA	FEMALE	337 (33.53%)
DECEASED		20	Women Percentage Fiscal Year Goal: 35%
CLUB CANCELLED	21	TOTAL FAMILY UNIT MEMBERS	202
OTHER	141	FAMILY MEMBERS PAYING HALF DUES	101
TOTAL	182		